

**Europower Group Limited
Stainacre Lane
Whitby
North Yorkshire
YO22 4NL**

**Inventory of Braiding Machines and Associated Equipment
as at 22nd February 2010**

Mayer single deck braiding line (Line 1) comprising:
MR-11 + L/W braiding machine
serial no. B-632 (2000)
20 carrier
Acoustic booth
SEB International HJ3 pay off stand/jack 1500kg capacity
Mayer MC-2 haul-off caterpillar
serial no. C-431
Take up stand.



Mayer single deck braiding line (Line 3) comprising:
MR-11 + L/W braiding machine
serial no. B-632 (2000)
20 carrier
Acoustic booth
SEB HJ3 pay off stand/jack 1500kg capacity
Mayer MC.3 haul-off caterpillar
serial no. C-307
Take up stand.



Rockwell braiding line (Line 5) comprising:
Braiding machine
36 carrier
Acoustic booth
Symation pay off stand
serial no. 002 (1995)
Haul-off caterpillar
Take up stand with Uhing traverse feed
serial no. 533500002.



Magnetech twin deck braiding line (Line 6) comprising:
225-11 braider (front end)
serial no. 479
24 carrier
225-11 braider (back end)
serial no. 478
24 carrier (no. carriers fitted)
Acoustic booth
SEB pay off stand
Norsdon series 3800V hot melt glue machine
serial no. 3830V-2LJV2D/R, stand and controls
Haul-off caterpillar
Take up stand with traverse feed unit.



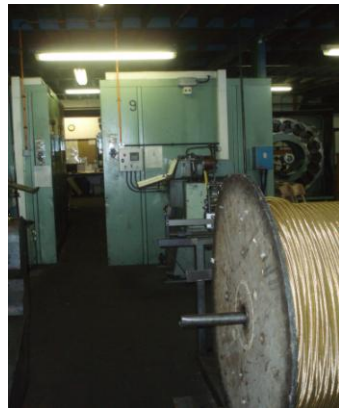
Rockwell Magnatech twin deck braiding line (Line 7) comprising:

- 225-11 braider
serial no. 477
- 24 carrier
- Rockwell 225 braider
serial no. 244A
- 24 carrier (no carriers fitted)
- Acoustic booth
- SEB pay off stand
- Haul-off caterpillar
- Take up stand with traverse feed unit.



Rockwell twin deck braiding line (Line 9) comprising:

- 225 braider
serial no. 55AA
- 225 braider
serial no. 55AB
- Acoustic booth
- Omec Cavalletto pay off stand
serial no. 001471 (1997)
- Norsdon series 3800V hot melt machine
serial no. K3830V – AN03D00125 and stand
- Haul-off caterpillar
- Take up stand with traverse feed unit.



Rockwell/Magnatech twin deck braiding line (Line 10) comprising:

- 225 braiding machine
serial no. 282A
- 24 carrier
- Magnatech 225-11 braiding machine
serial no. 480
(no carriers fitted)
- Acoustic booth
- SEB HJ3 pay off stand
- Haul-off caterpillar
- Take up stand with traverse feed unit.



Magnatech single deck braiding line (Line 11) comprising:

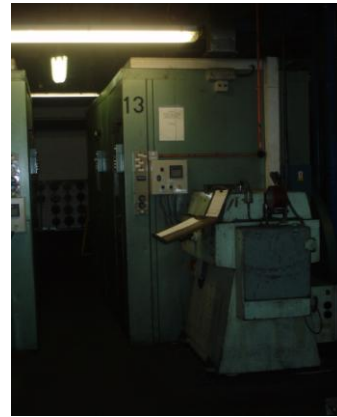
- 225-11 braiding machine
serial no. 473
- 24 carrier
- Double acoustic booth
- SEB HJ3 pay off stand
- Haul-off caterpillar
- Take up stand with traverse feed unit.



Mayer single deck braiding line (Line 12) comprising:
MR-11 8/2 braiding machine
serial no. B679 (c.2000)
16 carrier
Acoustic booth
SEB HJ3 pay off stand
Mayer MC-2 haul-off caterpillar
serial no. C-414
Take up stand with traverse feed unit
Control unit



Rockwell/Magnatech two deck braiding line (Line 13) comprising:
225 braiding machine
serial no. 298A
24 carrier
Magnatech 225-11 braiding machine
serial no. 474 (no carriers fitted)
Acoustic booth
SEB HJ3 pay off stand/jack
Norsdon 3800V hot melt glue applicator
serial no. K3830V-AN02F00100 with stand
Haul-off caterpillar
Take up stand with traverse feed.



Rockwell single deck braiding line (Line 14) comprising:
225 braiding machine
serial no. 97BA
20 carrier
Acoustic booth
SEB HJ3 pay off stand/jack
Haul-off caterpillar
Take up stand with traverse feed unit.



2xLTMW single bobbin winders
(no. 13 and no. 9).



Compair Broomwade RA 75 packaged air compressor
serial no. FO11/0533.



Vertical cylinder air receiver.

Matilda extrusion line comprising:

Pay off stand

Gillard M30D haul-off caterpillar
serial no. 6326 (1998)

Baughan 3500 extruder
serial no. C5113

Conair Churchill 3/100 temperature controller
serial no. 118-5-99

Cooling bath and pump

Caterpillar haul-off

Trumeter length counter

In house take up stand.

Matilda wrapping line comprising:

SEB HJ3 pay off stand

Omec AVV016-CVOL6 take up/pay off unit
serial no. 001133/1 (1998)

Truometer

Omec Benda Sbenda wrapping machine
serial no. 001126 (1988)

White & Street hot foil printing machine
serial no. WS 6060697

Guide stand

Omec AVV016-SVOLG take up/pay off unit
serial no. 001133 (1988)

Control console

Omec Pagnatela Type Linea Benda Sbenda 84.2 tape rewind unit
serial no. 001126.

Matilda steam cleaning line comprising:
Pay off stand
Tube guide stand
Degrease bath
Floataire steam bath and Loeffler Filter SBF-112-5-10
serial no. B-50041 (1997)
Sirio Edge 186TST Tiger Super steam cleaner, diesel
Take up stand.



Matilda curing oven comprising:
Hedinair M55/VFR oven
serial no. 18484 (2003)

Ridgid 300 thread cutting machine
serial no. 816812.

Q & S Sawmaster 260 horizontal bandsaw
serial no. 822076.

Richmond heard radial arm drill 3' with box table.

Colchester Triumph 2000 gap bed centre lathe
serial no. 56/0004/18836.

Harrison M500 gap bed centre lathe
serial no. 500539-341.

Ajax UP vertical filling machine
serial no. 16438.

B & S Model 19 pillar drill
serial no. 13985

Karg single deck vertical textile braiding line (Line K) comprising:
24V braiding machine
serial no. 2052
Pay off stand
Take up stand.



Magnatech single deck braiding line (Line 19) comprising:
225-11 braiding machine
serial no. 158B
20 carrier
Acoustic booth
SEB LH3 pay off stand
Haul-off unit
Take up stand.



Magnatech single deck braiding line (Line 22) comprising:
Magnatech 225-11 braiding machine
serial no. 454
24 carrier
Acoustic booth
Pay off stand
Haul-off unit
Take up stand.



SAHM 285 three section textile bobbin winder
serial no. 25392/3/1 (1984) with creels.

Euroswage Finn-Power P21M pipe swaging machine
serial no. 60373-01294.

Purpose built pipe skiving machine

Tube cut off machine with Numatic extraction unit.

External pipe skiving machine bench mounted.

Europower Komatsu heat test rig comprising:
Oil bath
Tank with immersion heater and level control
Pump
Controls.

Keelavite hydraulic impulse test rig.

Specila purpose flex tets rig.

Purpose built pipe abrasion tester.

Keelavite H161/9 hydraulic test rig (C5)
serial no. 17660 with control panel and external oil cooler.



Keelavite 10845 hydraulic test rig (rig D1)
serial no. 88475 with control panel and external oil cooler.



Portable oil sump pump, barrow mounted.

SECO RD 8000 hose burst rig
serial no. V-2375-01.

Bundenberg pressure gauge tester
serial no. 19920/380.

In house built pipe burst test rig.

Hose cut off machine.

Finn-Power hose swaging machine.

Eurowage P32M power swager
serial no. 3-56487.

Gillard M303C haul off unit
serial no. 6764 (2002)
Domino A 200 ink jet printer
Paint head with joint detector
Trumeter
Catenary arm
Vertical picker
Horizontal picker
Joint detector
Trumeter
Joint detector
Domino A 200 opaque ink jet printer
Pay off stand
Trumeter
Treadle operated cut off machine
Coiler
Sewer hose gluing comprising:
Large free rolling lay-off stand
Roller stand
Glue pot and stand
Manual cut off machine
Take up stand
Portable drum coiler.



Roller Conveyor.